



Macoun Club
2012

Monarch
Danaus plexippus



Macoun Club
2012

Cabbage White
Pieris rapae



Macoun Club
2012

Clouded Sulphur
Colias philodice



Macoun Club
2012

Canadian Tiger Swallowtail
Papilio canadensis



Macoun Club
2012

European Skipper
Thymelicus lineola



Macoun Club
2012

Eyed Brown
Lethe eurydice

Wingspan: 32-54 mm

Mobility: 7

Flight period: May to late Oct

Generations per year: 2

Overwinter stage: caterpillar / cocoon

Caterpillar host plants: Variety of legumes including clovers and alfalfa

Habitat: fields, roadsides, agricultural areas

Notes: sometimes adults gather at mud puddles to drink nutrients from mud

Clouded Sulphur
Colias philodice

Wingspan: 32-47 mm

Mobility: 8

Flight period: mid April to mid Oct

Generations per year: at least two

Overwinter stage: pupa (cocoon)

Caterpillar host plants: many crops in the mustard family including cabbage, cauliflower, broccoli, capers, and mustard

Habitat: open sunny areas including fields, farmland, and gardens

Notes: introduced from Europe >100 years ago

Cabbage White
Pieris rapae

Wingspan: 93-105 mm

Mobility: 10

Flight period: June to Sept

Generations per year: 2-4

Overwinter stage: adult (in Mexico)

Caterpillar host plants: milkweeds

Habitat: almost any open habitat

Notes: migrate south to Mexico where they overwinter in groups on fir trees in mountain forests; these forests are being chopped down for lumber by locals and lumber poachers

Monarch
Danaus plexippus

Wingspan: 38-48 mm

Mobility: 4

Flight period: mid June to early Sept

Generations per year: 1

Overwinter stage: caterpillar

Caterpillar host plants: sedges

Habitat: wet sedge meadows

Eyed Brown
Lethe eurydice

Wingspan: 19-26 mm

Mobility: 5.5

Flight period: early June to mid July

Generations per year: 1

Overwinter stage: egg

Caterpillar host plants: grasses

Habitat: any grassy area

Notes: native to Europe, it was introduced to North America about 100 years ago and is now one of our most common butterflies

European Skipper
Thymelicus lineola

Wingspan: 53-90 mm

Mobility: 8

Flight period: mid May to late July

Generations per year: 1

Overwinter stage: pupa (cocoon)

Caterpillar host plants: various trees including birch, aspen, and ash

Habitat: woodland edges

Notes: males may gather on hill tops to attract females for mating

Canadian Tiger Swallowtail
Papilio canadensis



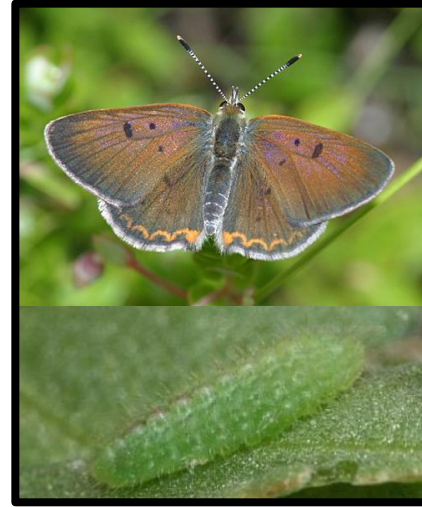
Macoun Club
2012

Dun Skipper
Euphyes vestris



Macoun Club
2012

Harvester
Feniseca tarquinius



Macoun Club
2012

Bog Copper
Lycaena epixanthe

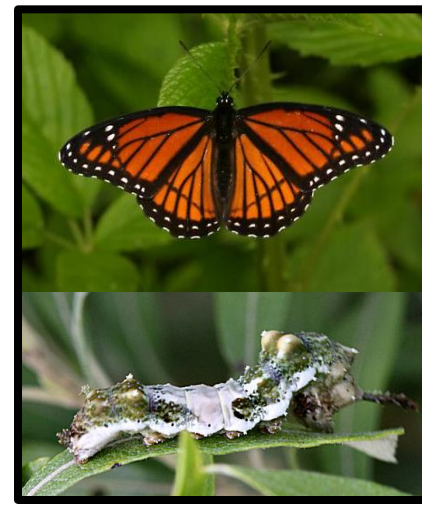


Macoun Club
2012

Mourning Cloak
Nymphalis antiopa



European Common Blue
Polyommatus icarus



Macoun Club
2012

Viceroy
Limenitis archippus

Wingspan: 17-22 mm
Mobility: 2
Flight period: mid June to mid July
Generations per year: 1
Overwinter stage: egg
Caterpillar host plants: cranberry
Habitat: acidic bogs

Bog Copper
Lycaena epixanthe

Wingspan: 23-32 mm
Mobility: 3
Flight period: late May to Aug
Generations per year: 1-2
Overwinter stage: ?
Caterpillar host plants:
Carnivorous! Eats woolly aphids,
especially on alder trees
Habitat: deciduous or mixed
woodlands along streams
Notes: the only carnivorous butterfly
in North America

Harvester
Feniseca tarquinius

Wingspan: 23-27 mm
Mobility: 5
Flight period: late June to mid Aug
Generations per year: 1-3
Overwinter stage: caterpillar
Caterpillar host plants: various
sedges
Habitat: wet areas near deciduous
woods such as meadows, seeps,
swamp edges, and streams
Notes: caterpillars sometimes
weave a shelter of leaves in which
they rest and eat

Dun Skipper
Euphyes vestris

Wingspan: 53-81 mm
Mobility: 7
Flight period: late May to early Sept
Generations per year: 2
Overwinter stage: caterpillar
Caterpillar host plants: willows,
sometimes poplars and aspens
Habitat: open wet areas such as wet
meadows
Notes: often mistaken for the
Monarch (can you see how they
differ?)

Viceroy
Limenitis archippus

Wingspan: 28-36 mm
Mobility: 4
Flight period: ?
Generations per year: ?
Overwinter stage: ?
Caterpillar host plants: bird's foot
trefoil
Habitat: grasslands, meadows,
marshes, sand dunes, riverbanks
Notes: native to Europe, it was
recently (2005) found near Mirabel
airport in Montreal

European Common Blue
Polyommatus icarus

Wingspan: 45-79 mm
Mobility: 7
Flight period: April to late Oct
Generations per year: 2
Overwinter stage: adult
Caterpillar host plants: willows,
cottonwoods, elms, birches,
hackberries
Habitat: forests, wetlands, woodland
edges, fields, yards, city parks
Notes: one of the first butterfly
species to fly in the Spring

Mourning Cloak
Nymphalis antiopa